

# Evaluation card

## Gerbera

### Flower

#### **Botrytis**

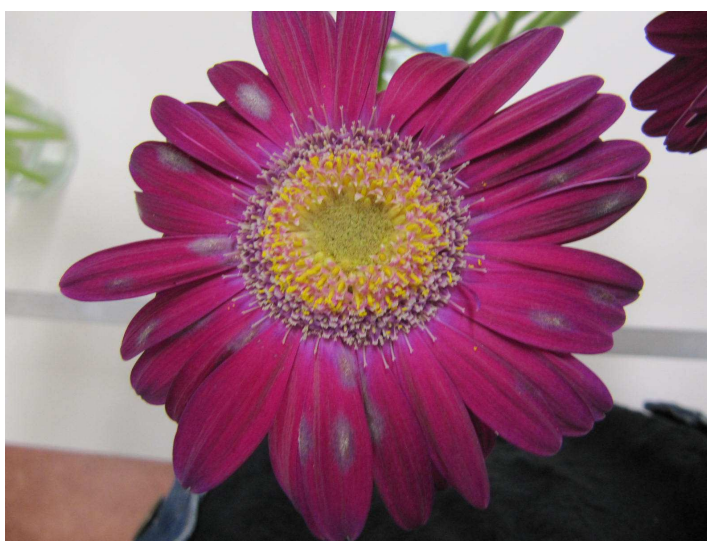
*Description:* the flower wilts entirely or partially due to rot in the heart (heart rot) and/or distinct brown stripes or spots are visible in the ligulate florets.

*Reject:* if all or part of the flower is wilting due to rot in the heart and/or if more than 10% of the surface of the ligulate florets is affected by Botrytis.

#### **Mildew**

*Description:* the ligulate flowers are affected by mildew.

*Reject:* if 10% (see picture) or more of the surface of the ligulate flowers (at the top) is affected.



#### **Mould in flowerheart**

*Description:* fungous infection shows in the heart of the flower.

*Reject:* if more than 50% of the heart is affected.

#### **Wilting flowers**

*Description:* the ligulate florets are wilting.

*Reject:* if more than 50% of the ligulate florets are wilting.

#### **Closing**

*Description:* the flowers close.

*Record:* degree of closure.

#### **End of flowering**

*Description:* the flower (the heart) falls apart.

*Reject:* if this phenomenon occurs.

Source: Knowledge Center Product Quality.

Copyright© 2014 FloraHolland, Aalsmeer, The Netherlands.

No part of this publication may be reproduced in any form, by print, photocopy, microfilm or any other means without written permission from the publisher (FloraHolland, P.O. Box 1430 BA Aalsmeer, The Netherlands).

Gerbera 14/11/WG

### Discolouration

- Description:* the entire flower is discoloured or the tips turn blue or brown.  
*Reject:* if more than 50% of the ligulate florets shows clearly discoloured tips.  
*Record:* record discolouration of the flower.

### Changed appearance

- Description:* the ligulate florets shrivel or roll up  
*Reject:* if spaces appears between the ligulate florets (loss of symmetry, see photos).



do not reject



reject from this point

### Deformation

- Record:* the flower is deformed.

### Stem

#### Drooping

- Description:* the flower hangs below the highest point of the stem.  
*Reject:* when detected.

#### Desiccation

- Description:* desiccation and bending of the stem just below the bud.  
*Reject:* if the flower wobbles on its stem.

#### Bending

- Description:* the stem bends.  
*Reject:* when detected.

#### Chlorine damage

- Record:* brown spots appear on the stem or the (bottom end of the) stem turns brown or the bottom end of the stem loses its colour.

#### Slimy stems

- Record:* the part of the stem standing in the water has turned slimy.